

# TURNER HUGHES ARCHITECTS

Level 2, 121 Alexander Street,  
Crow's Nest NSW 2065  
ABN 93 053 938 579

P: (02) 9439-3200  
F: (02) 9439-1238  
E: tha@turnerhughes.com.au

This drawing is subject to copyright and must not be reproduced or used without the consent of Turner Hughes Architects Pty. Ltd.

Title: Section - Entry/Exit Ramp (looking North)

Project: DOMUS CITRIADORA  
8 Myrtle Street, Prospect

Scale: @ A3 1:100

Date: 26.7.11

Drawing Number:

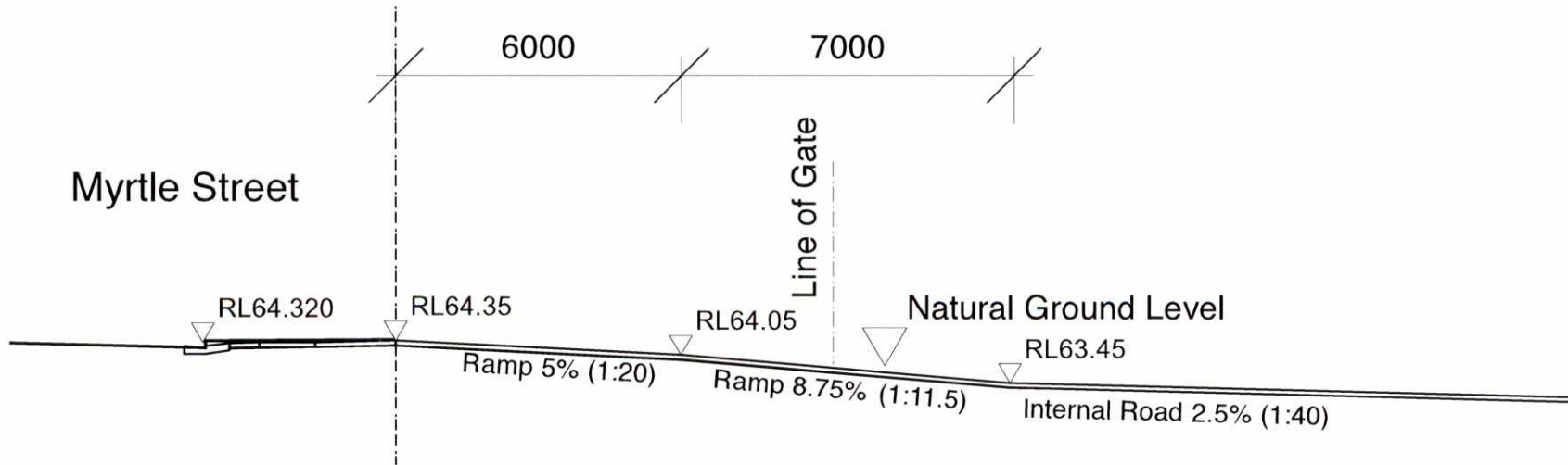
Rev:

00.157.SK04 C

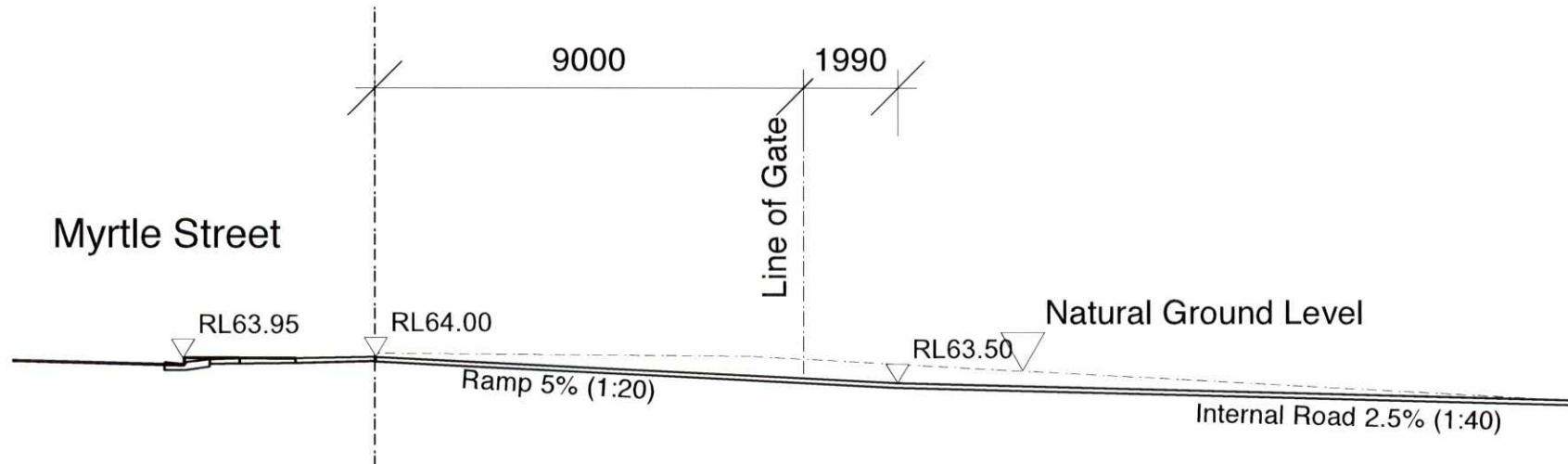
**TURNER  
HUGHES**  
ARCHITECTS

ATTACHMENT 5

Plan 1



**SECTION - MYRTLE STREET EXIT DRIVEWAY**



**SECTION - MYRTLE STREET ENTRY DRIVEWAY**

**TURNER HUGHES ARCHITECTS**

Level 2, 121 Alexander Street,  
Crow's Nest NSW 2065  
ABN 93 053 938 579

P: (02) 9439-3200  
F: (02) 9439-1238  
E: tha@turnerhughes.com.au

This drawing is subject to copyright and must not be reproduced or used without the consent of Turner Hughes Architects Pty. Ltd.

Title: Detail- Myrtle Street Driveway Crossing  
Project: DOMUS CITRIADORA  
8 Myrtle Street, Prospect

Scale: @ A3 1:100

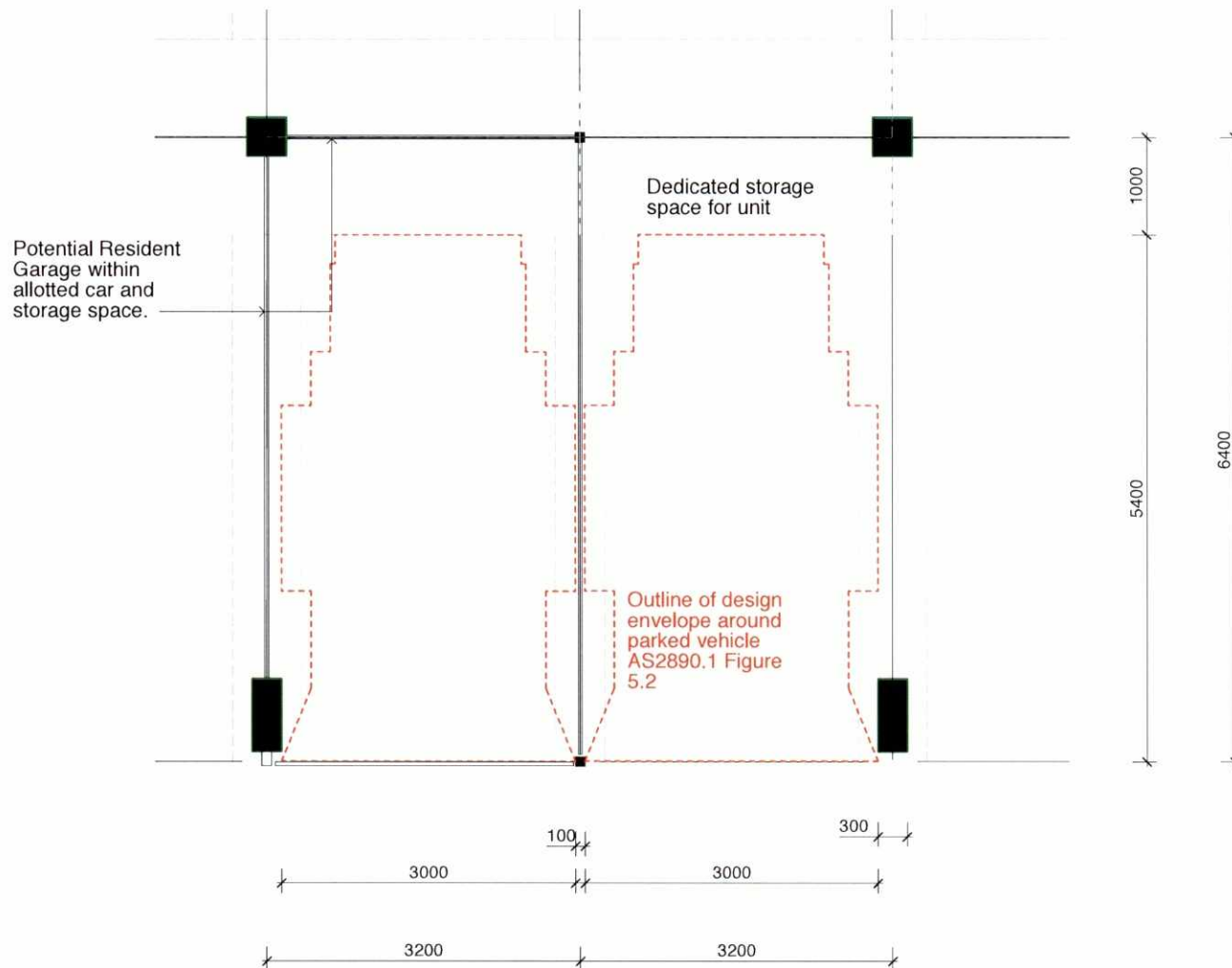
Date: 04.04.12

Drawing Number:

Rev:

00.157.SK05 C

**TURNER  
HUGHES**  
ARCHITECTS



## TURNER HUGHES ARCHITECTS

Level 2, 121 Alexander Street,  
Crows Nest NSW 2065  
ABN 93 053 938 579

P: (02) 9439-3200  
F: (02) 9439-1238  
E: tha@turnerhughes.com.au

This drawing is subject to copyright and must not be reproduced or used without the consent of Turner Hughes Architects Pty. Ltd.

Title: Detail- Resident Carparking.  
Project: DOMUS CITRIADORA  
8 Myrtle Street, Prospect

Scale: @ A3 1:50

Date: 18.04.12

Drawing Number:

Rev:

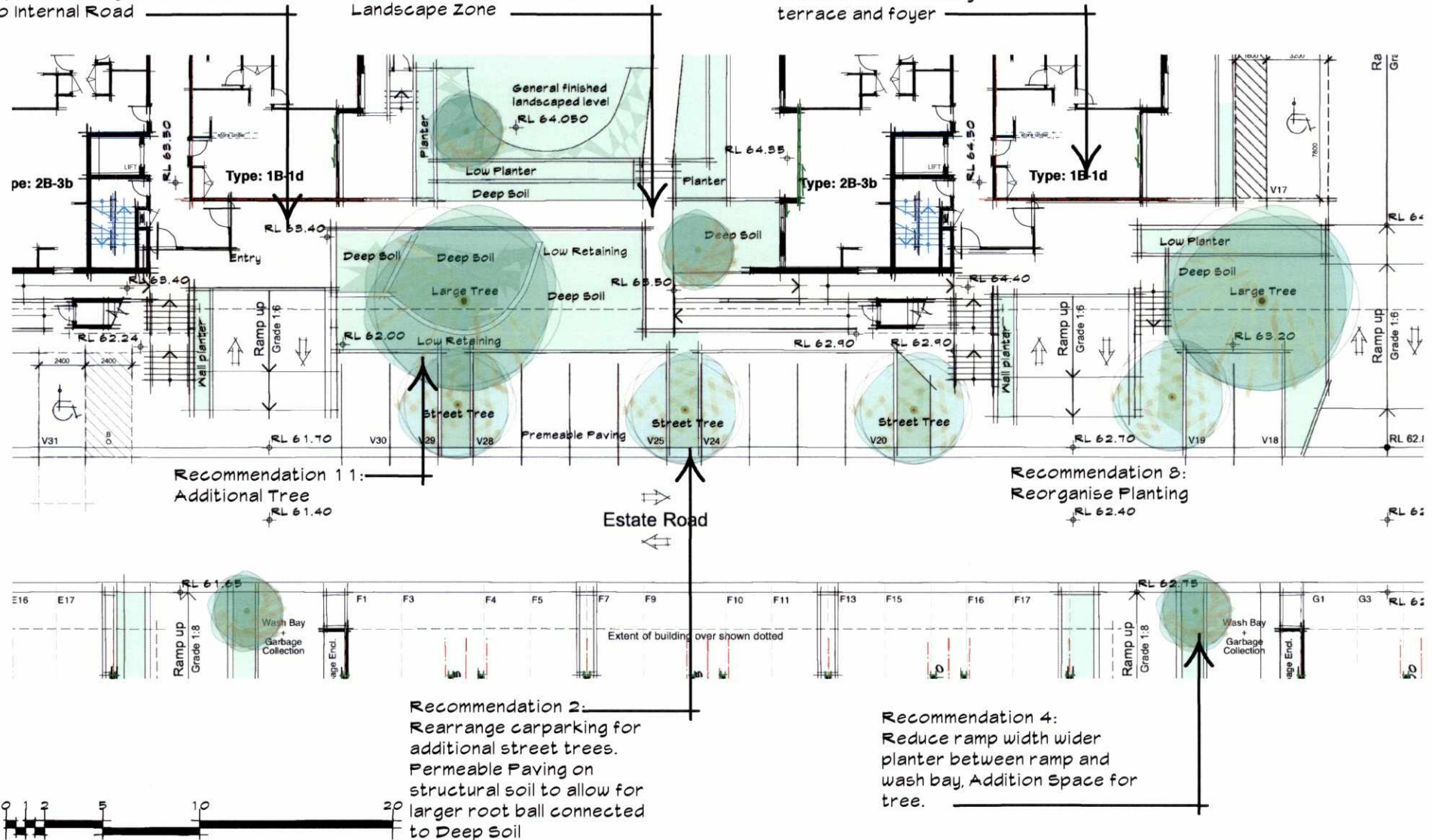
00.157.SK06 B

**TURNER  
HUGHES**  
ARCHITECTS

**Recommendation 8:**  
Improved Entry and Address  
to Internal Road

**Recommendation 3:**  
Low retaining and small level  
changes for transitionally  
Landscape Zone

**Recommendation 3:**  
2 Bed apartment reduced to  
1 Bed to create entry  
terrace and foyer



**TURNER HUGHES ARCHITECTS**

Level 2, 121 Alexander Street,  
Crow's Nest NSW 2065  
ABN 93 053 938 579  
P: (02) 9439-3200  
F: (02) 9439-1238  
E: tha@turnerhughes.com.au

This drawing is subject to copyright and must not be reproduced or used  
without the consent of Turner Hughes Architects Pty. Ltd.

Title: Detail- Landscaped Courtyards  
Project: DOMUS CITRIADORA  
8 Myrtle Street, Prospect

Scale: @ A3 1:200

Date: 04.04.12

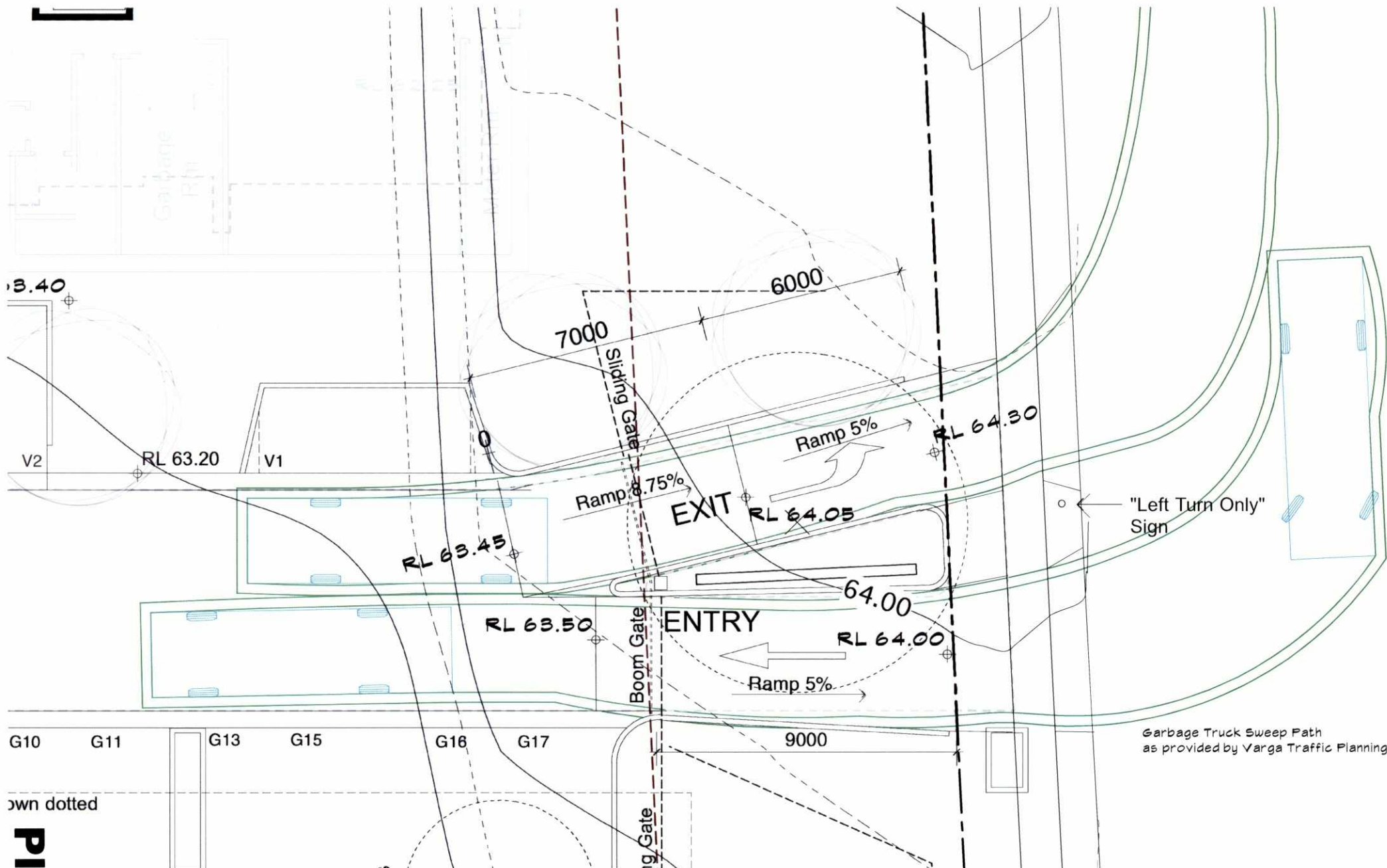
Drawing Number:

Rev:

00.157.SK07 A

**TURNER  
HUGHES**  
ARCHITECTS





own dotted

Plan 5

# TURNER HUGHES ARCHITECTS

Level 2, 121 Alexander Street,  
Crow's Nest NSW 2065  
ABN 93 053 938 579

P: (02) 9439-3200  
F: (02) 9439-1238  
E: tha@turnerhughes.com.au

This drawing is subject to copyright and must not be reproduced or used without the consent of Turner Hughes Architects Pty. Ltd.

\\turnerhughes\server\Drawings\00-15704-PROJECT FILES\CAD Files\17-Works\157-04\Works\157-04.dwg

Title: Detail- Revised Myrtle Street Driveway  
Project: DOMUS CITRIADORA  
8 Myrtle Street, Prospect

Scale: @ A3 1:100

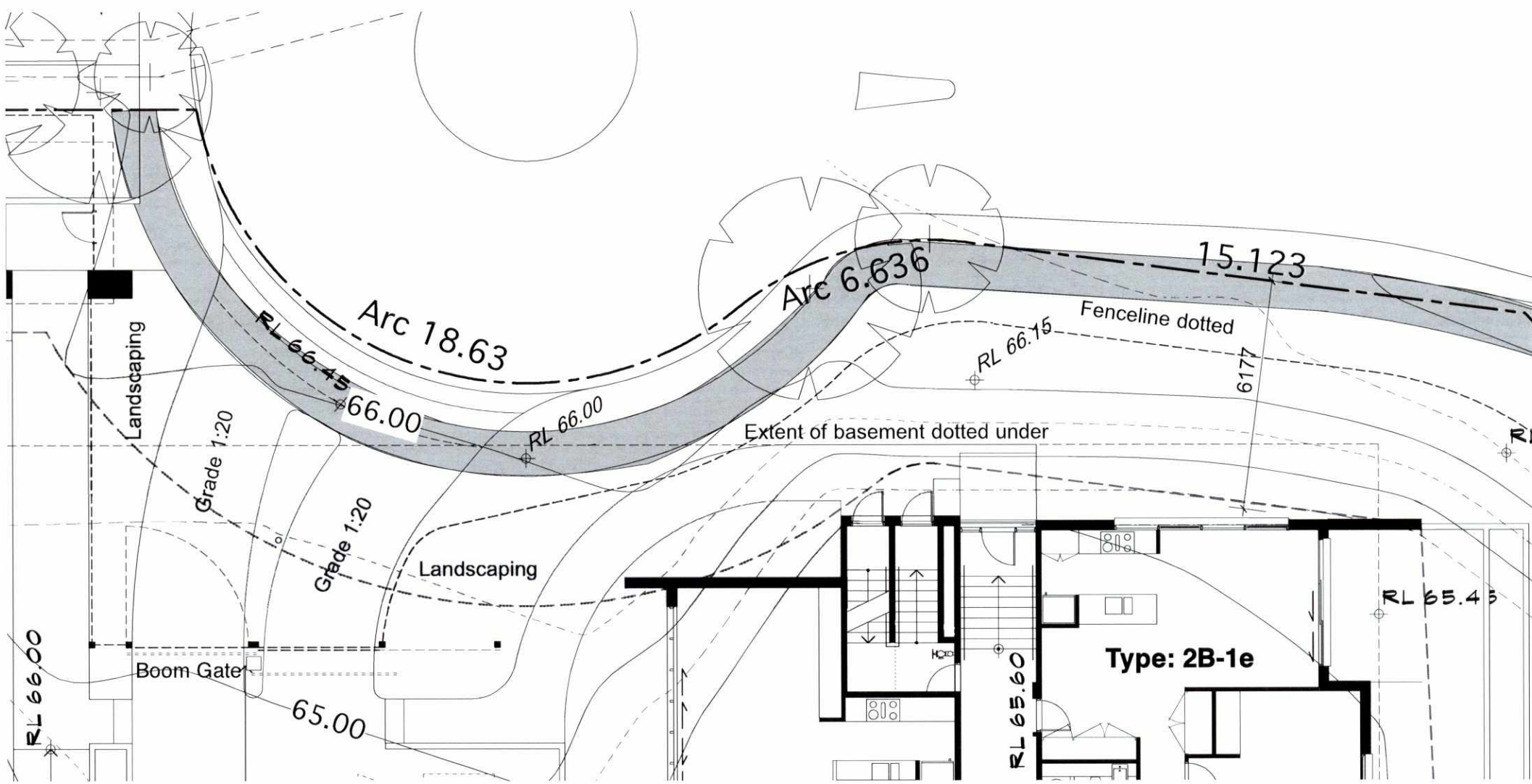
Date: 18.04.12

Drawing Number:

Rev:

00.157.SK08 B

TURNER  
HUGHES  
ARCHITECTS



Plan 6

**TURNER HUGHES ARCHITECTS**

Level 2, 121 Alexander Street,  
 Crows Nest NSW 2065  
 ABN 93 053 938 579

P: (02) 9439-3200  
 F: (02) 9439-1238  
 E: tha@turnerhughes.com.au

This drawing is subject to copyright and must not be reproduced or used without the consent of Turner Hughes Architects Pty. Ltd.

Title: Detail- Revised Roundabout Footpath  
 Project: DOMUS CITRIADORA  
 8 Myrtle Street, Prospect

Scale: @ A3 1:100

Date: 18.04.12

Drawing Number:

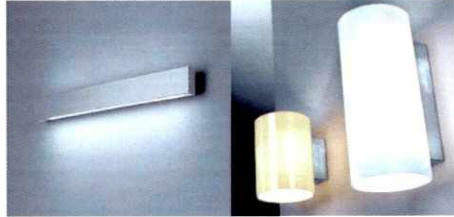
Rev:

00.157.SK09 A

**TURNER  
 HUGHES**  
 ARCHITECTS



Use of Light fixture and style to mark journey with Spotlights to mark stopping points like entries



Bright Signature colours to lift landings



Colour Theme Feature Treatments for Each building

White feature panel to door surround with recessed lighting to demarcate entries



Perspective

Tile Floors

Windows to both ends of corridor, view to street, daylight, air flow

Feature Treatment to body of corridor with wall lighting.

## TURNER HUGHES ARCHITECTS

Level 2, 121 Alexander Street,  
Crow's Nest NSW 2065  
ABN 93 053 938 579

P: (02) 9439-3200  
F: (02) 9439-1238  
E: tha@turnerhughes.com.au

This drawing is subject to copyright and must not be reproduced or used without the consent of Turner Hughes Architects Pty. Ltd.

Title: Concept Sketch - Corridor Treatment  
Project: DOMUS CITRIADORA  
8 Myrtle Street, Prospect

Scale: @ A3 n.t.s.

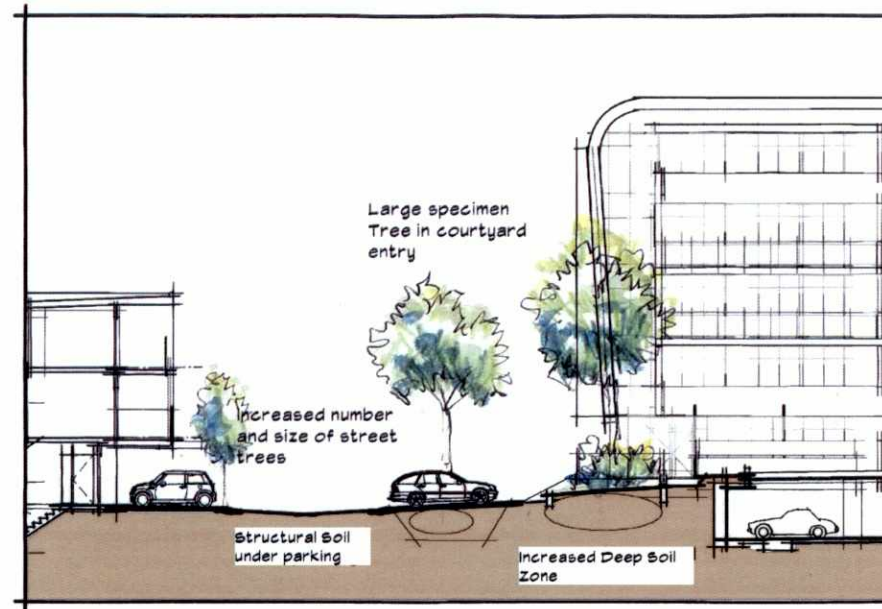
Date: 18.04.12

Drawing Number:

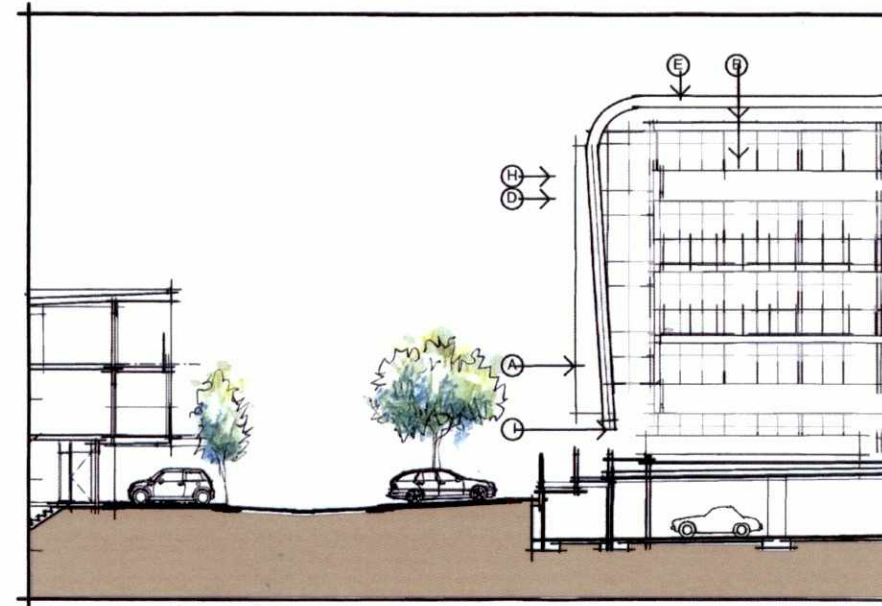
Rev:

00.157.SK10 A

**TURNER  
HUGHES**  
ARCHITECTS



Revised Proposal



Submitted Proposal

## TURNER HUGHES ARCHITECTS

Level 2, 121 Alexander Street, P: (02) 9439-3200  
 Crows Nest NSW 2065 F: (02) 9439-1238  
 ABN 93 053 938 579 E: tha@turnerhughes.com.au

This drawing is subject to copyright and must not be reproduced or used without the consent of Turner Hughes Architects Pty. Ltd.

Title: Sketch - Landscape Transition  
 Project: DOMUS CITRIADORA  
 8 Myrtle Street, Prospect

Scale: @ A3 1:200

Date: 18.04.12

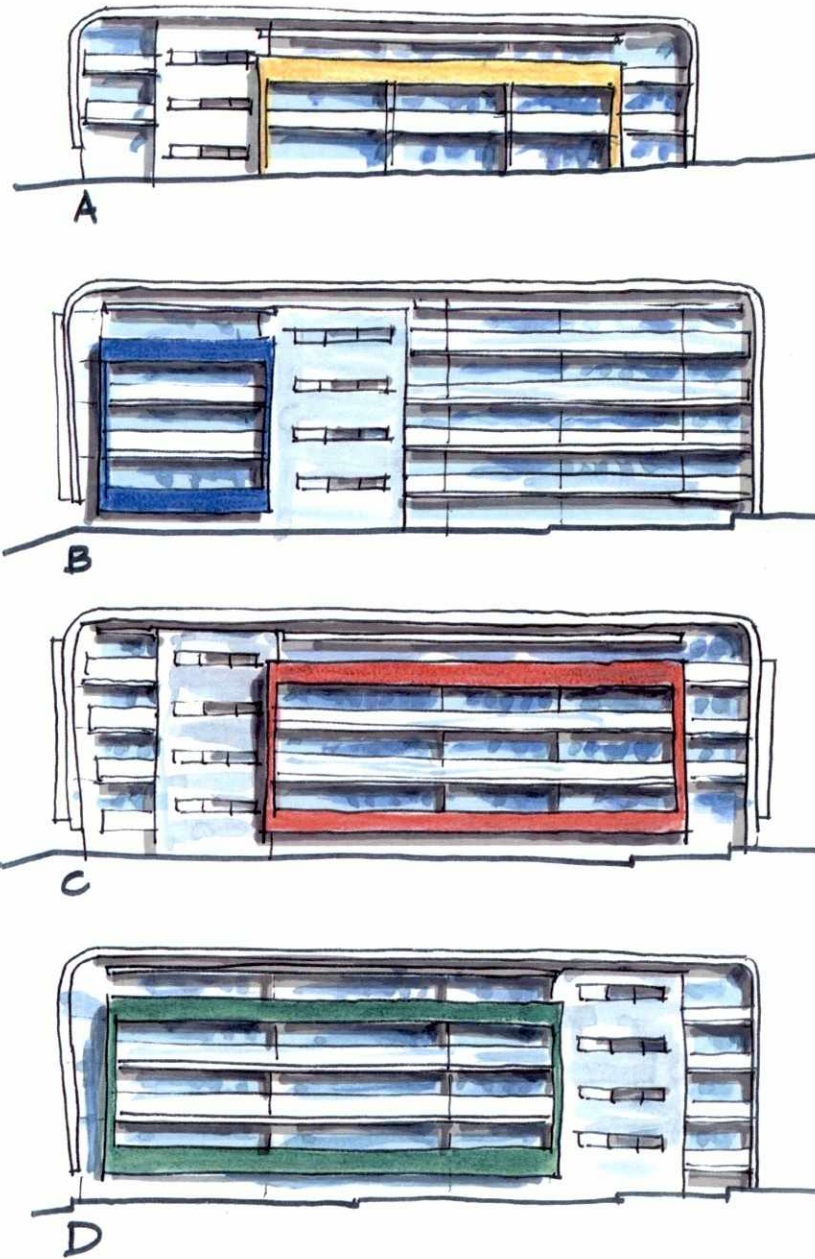
Drawing Number:

Rev:

00.157.SK11 A

**TURNER  
 HUGHES**  
 ARCHITECTS





## TURNER HUGHES ARCHITECTS

Level 2, 121 Alexander Street,  
 Crofts Nest NSW 2065  
 ABN 93 053 938 579

P: (02) 9439-3200  
 F: (02) 9439-1238  
 E: tha@turnerhughes.com.au

This drawing is subject to copyright and must not be reproduced or used without the consent of Turner Hughes Architects Pty. Ltd.

Title: Sketch - Balcony Series  
 Project: DOMUS CITRIADORA  
 8 Myrtle Street, Prospect

Scale: @ A3 n.t.s

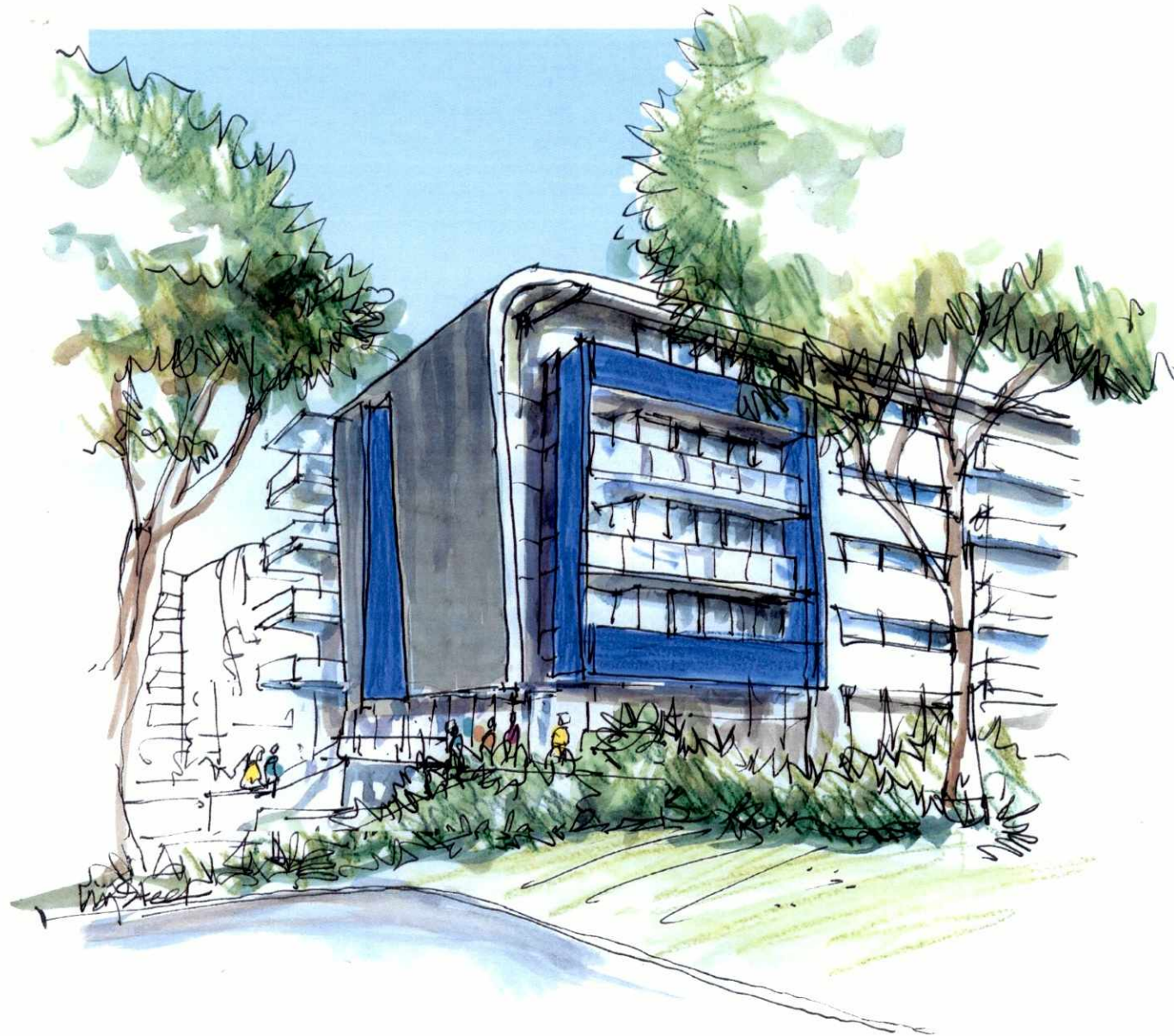
Date: 18.04.12

Drawing Number:

Rev:

00.157.SK12 A

**TURNER  
 HUGHES**  
 ARCHITECTS



**TURNER HUGHES ARCHITECTS**

Level 2, 121 Alexander Street, P: (02) 9439-3200  
Crows Nest NSW 2065 F: (02) 9439-1238  
ABN 93 053 938 579 E: [tha@turnerhughes.com.au](mailto:tha@turnerhughes.com.au)

This drawing is subject to copyright and must not be reproduced or used without the consent of Turner Hughes Architects Pty. Ltd.

Title: Sketch - Block B  
Project: DOMUS CITRIADORA  
8 Myrtle Street, Prospect

Scale: @ A3 n.t.s

Date: 18.04.12

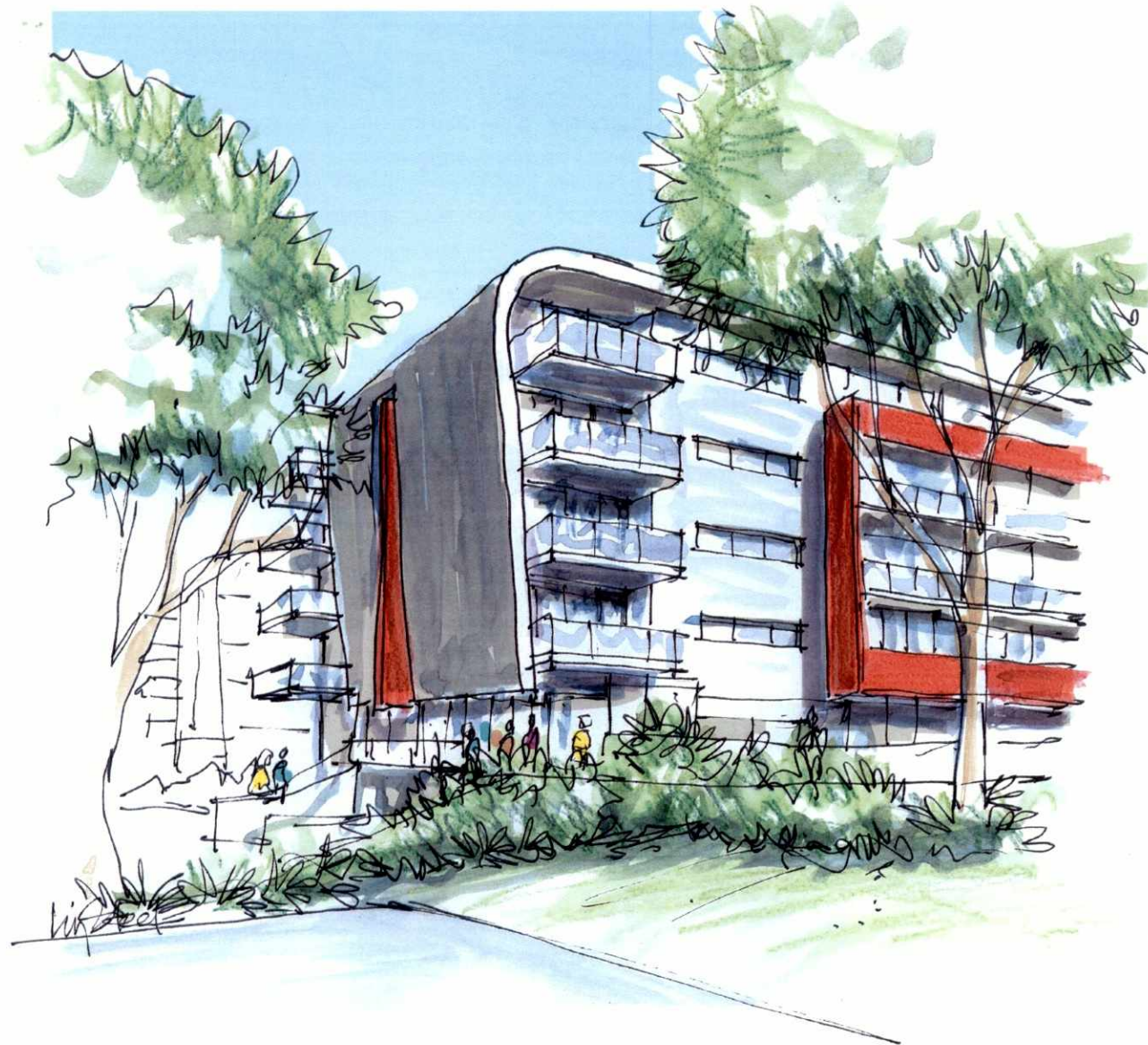
Drawing Number:

Rev:

00.157.SK13 A

**TURNER  
HUGHES**  
ARCHITECTS





Plan 11

**TURNER HUGHES ARCHITECTS**

Level 2, 121 Alexander Street, P: (02) 9439-3200  
 Crows Nest NSW 2065 F: (02) 9439-1238  
 ABN 93 053 938 579 E: tha@turnerhughes.com.au

This drawing is subject to copyright and must not be reproduced or used without the consent of Turner Hughes Architects Pty. Ltd.

Title: Sketch - Block C  
 Project: DOMUS CITRIADORA  
 8 Myrtle Street, Prospect

Scale: @ A3 n.t.s

Date: 18.04.12

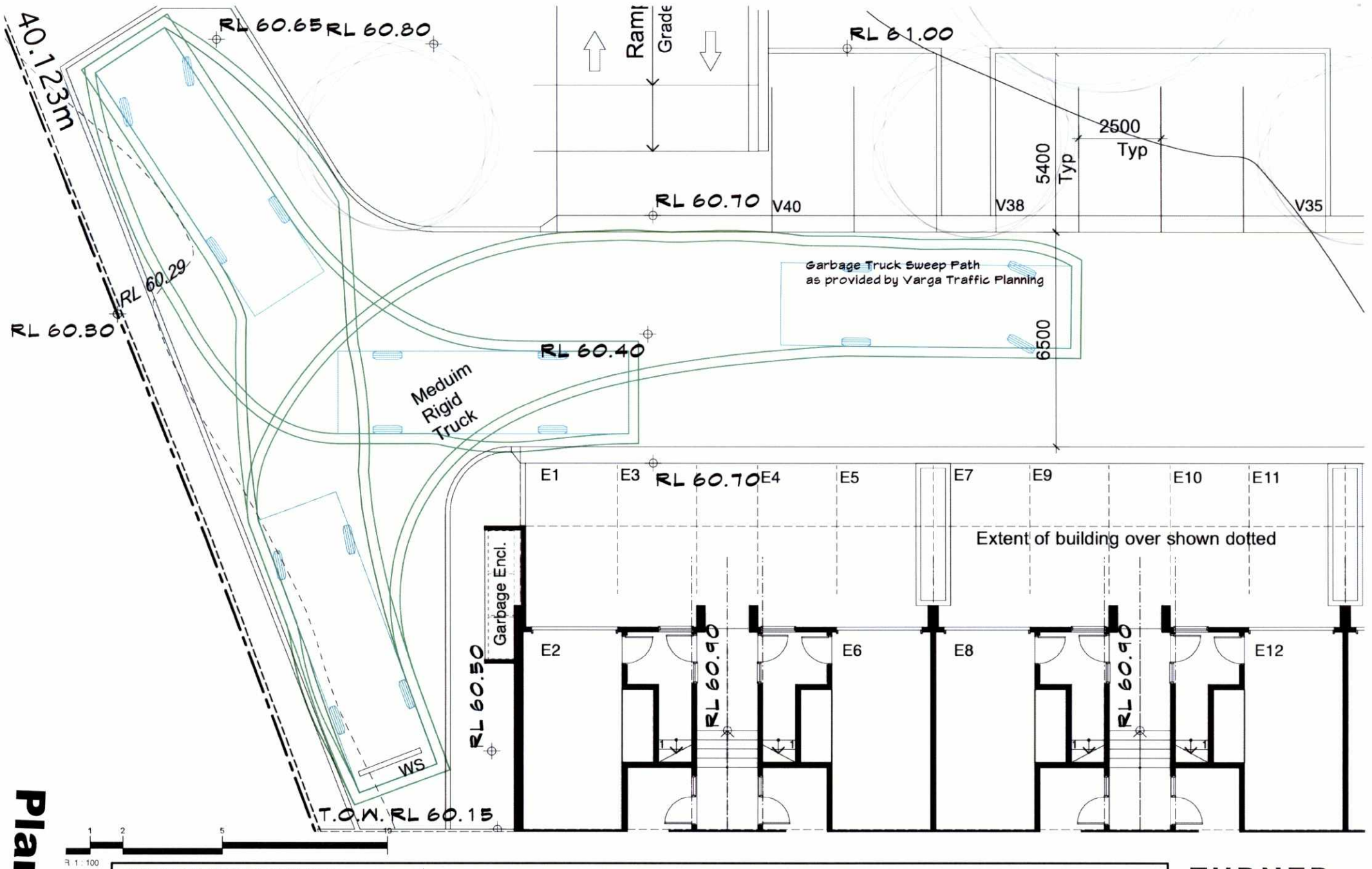
Drawing Number:

Rev:

00.157.SK14 A

**TURNER  
 HUGHES**  
 ARCHITECTS





Plan 12

# TURNER HUGHES ARCHITECTS

Level 2, 121 Alexander Street,  
Crow's Nest NSW 2065  
ABN 93 053 938 579  
P: (02) 9439-3200  
F: (02) 9439-1238  
E: tha@turnerhughes.com.au

This drawing is subject to copyright and must not be reproduced or used without the consent of Turner Hughes Architects Pty. Ltd.

Title: Detail- Driveway Truck Reversing Bay  
Project: DOMUS CITRIADORA  
8 Myrtle Street, Prospect

Scale: @ A3 1:100

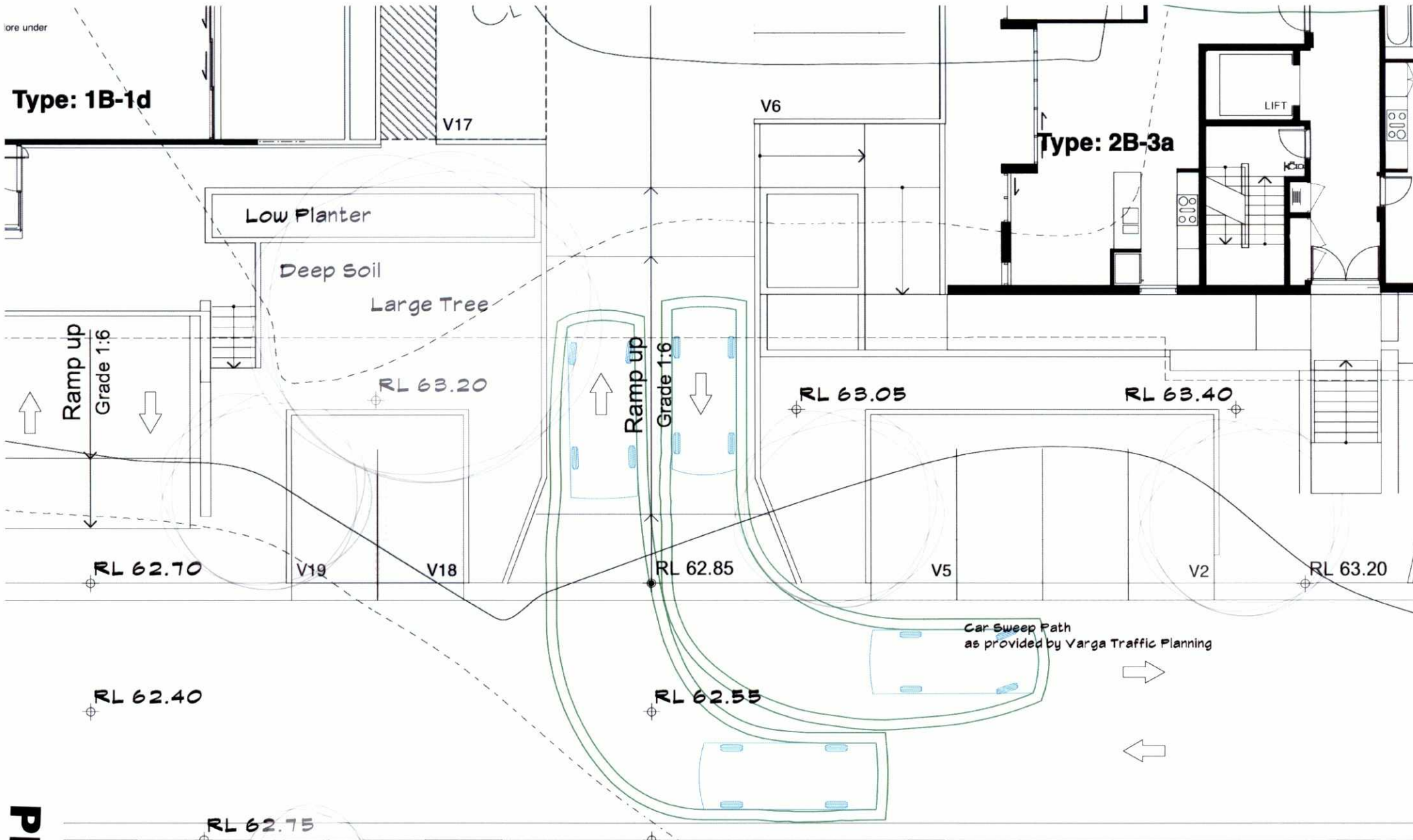
Date: 18.04.12

Drawing Number:

Rev:

00.157.SK15 A

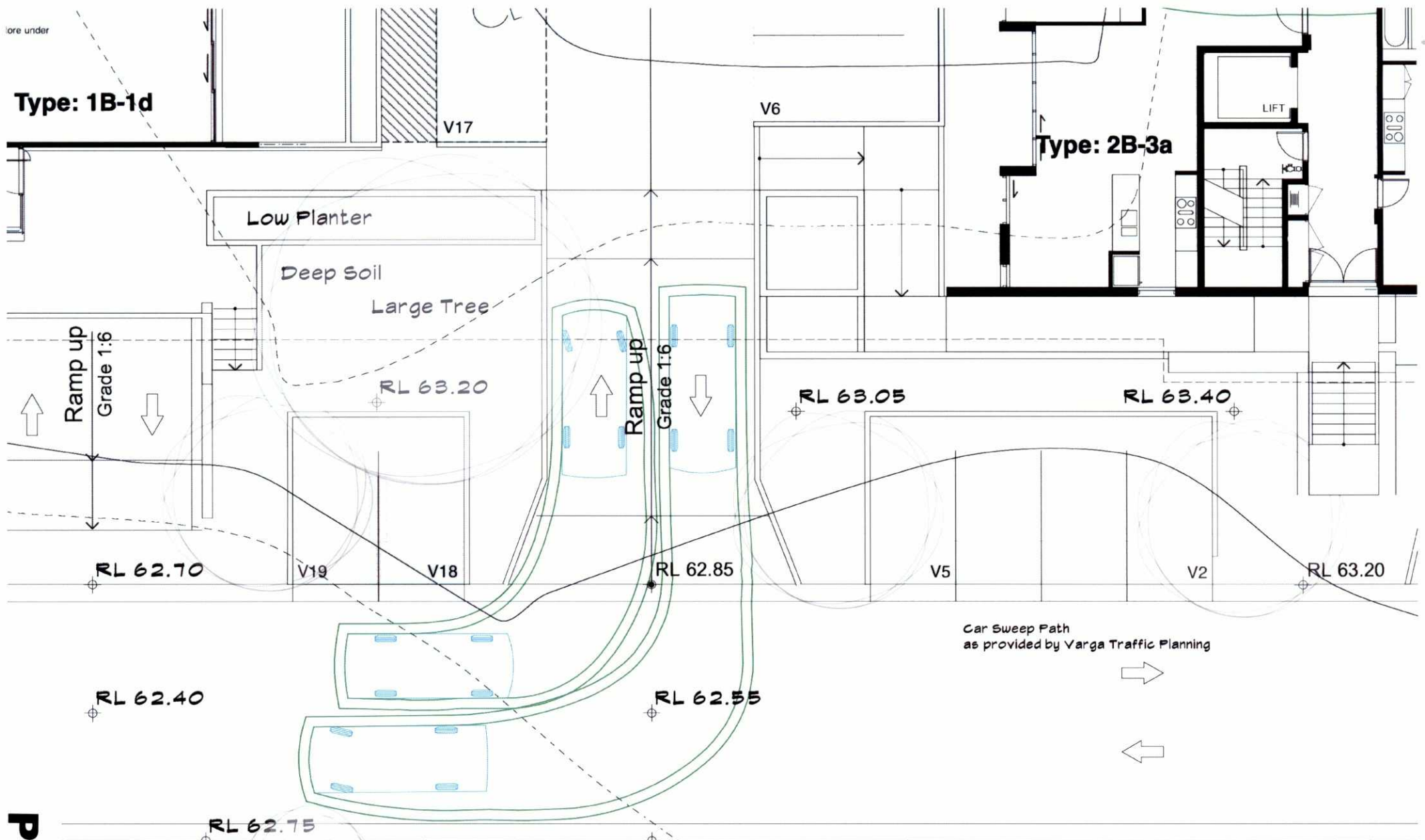
**TURNER  
HUGHES**  
ARCHITECTS



Plan 13

<p><b>TURNER HUGHES ARCHITECTS</b></p> <p>Level 2, 121 Alexander Street, Crow's Nest NSW 2065 ABN 93 053 938 579</p> <p>P: (02) 9439-3200 F: (02) 9439-1238 E: tha@turnerhughes.com.au</p> <p><small>This drawing is subject to copyright and must not be reproduced or used without the consent of Turner Hughes Architects Pty. Ltd.</small></p>	<p>Title: Detail- Revised Internal T-intersection Driveway</p> <p>Project: DOMUS CITRIADORA 8 Myrtle Street, Prospect</p>	<p>Scale: @ A3 1:100      Date: 18.04.12</p> <p>Drawing Number: 00.157.SK16 A      Rev:</p>
--	---	---

**TURNER  
HUGHES  
ARCHITECTS**



Plan 14

# TURNER HUGHES ARCHITECTS

Level 2, 121 Alexander Street,  
 Crows Nest NSW 2065  
 ABN 93 053 938 579  
 P: (02) 9439-3200  
 F: (02) 9439-1238  
 E: tha@turnerhughes.com.au

This drawing is subject to copyright and must not be reproduced or used without the consent of Turner Hughes Architects Pty. Ltd.

Volume/Server/Active/TOB - Myrtle St Prospect 00.157A PROJECT FILES/ CAD Files/ Works/157-Site/Works.via

Title:

Detail- Revised Internal T-intersection Driveway 2

Project:

DOMUS CITRIADORA  
 8 Myrtle Street, Prospect

Scale: @ A3 1:100

Date: 18.04.12

Drawing Number:

Rev:

00.157.SK17 A

**TURNER  
 HUGHES**  
 ARCHITECTS